



High tech, warm heart That's how Cuyuna cares

FY2020 ANNUAL REPORT

CRMC
CUYUNA REGIONAL
MEDICAL CENTER
Dedicated to You. Every Day.

Message from Leadership

Thank you for your support as we seek to provide patients and families with access to exceptional and compassionate care for our community's health and well-being. In this report, you will read about our commitment to building a healthy and thriving community through vital new equipment, advanced technologies, and facility upgrades.

This past year we were proud to establish and operationalize our fourth physician clinic in Breezy Point. We also completed building a new Orthopaedics, Spine & Pain Management Clinic, began a new palliative care program and installed new CT scanner technology. In addition, CRMC became the title sponsor of the Brainerd Lakes Area Tour Showcase, an effort to bring a PGA Tour Event to the Brainerd Lakes that benefits our Charitable Fund.

I hope you take a moment to read the information in this report that demonstrates the passion and drive we see every day in our staff, providers, and volunteers. One walk through the hallways of CRMC gives a glimpse into the tremendous power of the human spirit.

CRMC will continue to make strategic investments in its technology, services, equipment, and infrastructure so we're positioned to deliver the care our community needs for years to come. Your support ensures we'll be able to strengthen and enhance services and treatments that improve the well-being of our friends and neighbors throughout the area.

We have much to celebrate as we reflect on our accomplishments of the last year, and with your continued support, we have much to look forward to in the future.

High tech, warm heart. That's how Cuyuna cares.



“Being a new patient at CRMC, I am very impressed with the care I received. It was easy to get established as a new patient and I even obtained three screenings, accomplished within 1 and 1/2 hour on the same day. The doctors, technicians and nurses were very professional, attentive, thorough, and most of all caring. With strict COVID restrictions in place, I felt safe entering the facility. I am aware of CRMC's high ratings. CRMC surpassed my expectations.”

- **Ejje Hanson, Bloomington**



“CRMC received a letter of appreciation from a father whose son was treated in the ER after being injured while bicycling on the Cuyuna Country State Recreation Area trails. He was very impressed with the local police, paramedics and CRMC's employees and physicians. From a sweet and caring admitting clerk to a paramedic who kept speaking with him to keep his mind off his son's injury to the doctors who expertly set a broken bone and the nurses who held his son's hand when he couldn't, he was very grateful. Orthopedic experts in the Twin Cities where the boy had followup care said no surgery would be needed because of how well the injury was treated at CRMC. “With heart-felt thanks we want to express our gratitude to you all. Crosby and the Iron Range is lucky to have a hospital with big city skills but small-town bedside manner. My son has not been in pain since we left, he keeps saying his pain is somewhere between 0 and 1/2. Thank you so much and God bless!”

- **Christian Wilson, Big Lake**

“After surgeries at Abbott Northwestern and Mayo Clinic, I went to Cuyuna Regional Medical Center for chemotherapy. I liked knowing there is a relationship between Cuyuna and Virginia Piper Cancer Institute. All of the Cancer Center staff members were wonderful. Dr. Darabi, who we are so fortunate to have working there, had to reconfigure my treatment several times. Three months out, I am cancer free. I am a grateful patient. Thank you for your commitment to outstanding medical care and being a positive force in the community.”

- **Gloris O'Connell, Garrison**



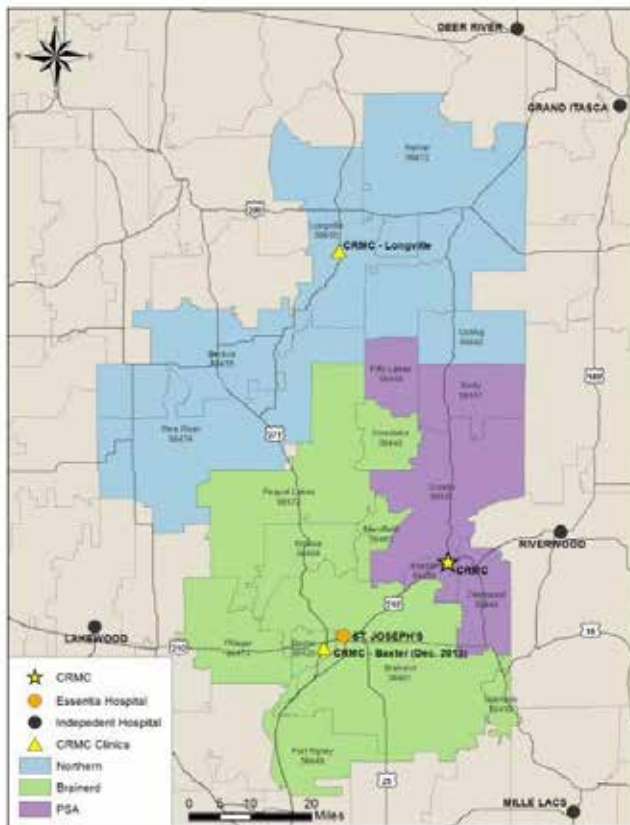
“There was no recovery, I didn't even feel like I had surgery. I had open inguinal hernia repair in North Dakota about six months earlier and that resulted in a seven-week recovery with an enormous amount of pain, bruising and swelling. I was at a family reunion this summer when my sister, a CRMC nurse, said you should have come to us because we don't do open procedures and you'll recover much faster. She was right, in CRMC's surgery I received only three little prick holes, had no discomfort and didn't need pain medication. I left the hospital the same day and within two days was on a drive to Arizona for the winter. CRMC is a small hospital but they are on top of things and do a tremendous job.”

- **Jerry Thom, Edgeley, North Dakota**



Serving the Cuyuna Lakes region for more than 57 years

Cuyuna Regional Medical Center is a community, non-profit health care organization dedicated to providing care for every person who comes through its doors. Founded in 1962 by Crosby area miners.



Serves approximately 60,000 residents of all ages in the Brainerd Lakes and its surrounding communities.

Our service area extends far beyond Crosby. We care for more than 60,000 residents in Aitkin, Brainerd, Backus, Baxter, Crosslake, Deerwood, Emily, Fifty Lakes, Fort Ripley, Garrison, Ironton, Longville, Merrifield, Nisswa, Outing, Pequot Lakes, Pillager, Pine River and Remer.

Physician Clinics

CRMC's physician clinics provide comprehensive, high quality medical care through an impressive range of primary and specialty care physicians. From family medicine practitioners and internists to orthopaedic surgeons and obstetrician/gynecologists, our growing family of physicians and professional staff manage a wide variety of our patients' health care needs. CRMC offers four locations for the convenience of our patients: Baxter next to the Minneapolis Heart Institute, Breezy Point across the highway from the Sports Arena, Crosby inside the hospital and Longville just off Girl Lake.



Services

- Anesthesiology
- Birthing Center
- Cancer Care Center
- Clinical Nutrition
- Diabetes Education
- ER and Ambulance
- Foot & Ankle
- Hospice and Home Health
- Hospital Medicine
- Intensive Care Unit
- Laboratory
- Minnesota Center for Obstetrics/Gynecology
- Minnesota Center for Orthopaedics
- Minnesota Institute for Minimally Invasive Surgery
- Minnesota Reflux & Heartburn Center
- Pain Management Center
- Palliative Care
- Pharmacy
- Radiology
- Rehabilitation
- Surgery Center
- Stroke Care
- Urology
- Wellness



FY 2020 Facts

	2020	2019	2018
Admissions	1,551	1,596	1,804
Patient Days	4,079	4,123	4,658
Length of Stay	2.63	2.58	2.58
Hospital Average Daily Census	13.5	14.10	14.50
Care Center Resident Days	22,238	25,691	30,890
Clinic Visits	79,958	76,073	74,768
Emergency Visits	9,985	10,473	10,524
Births	179	200	182
Surgeries	8,512	7,929	7,499
Outpatient Visits	184,853	184,863	184,230

FY 2020

Charity care
\$82,837

Unpaid costs of Medicaid
\$2,141,175

Subsidized health services
\$976,825

Community education & support
\$1,152,587

Average salary and benefit cost per hour
for all employees excluding physicians
\$33.81

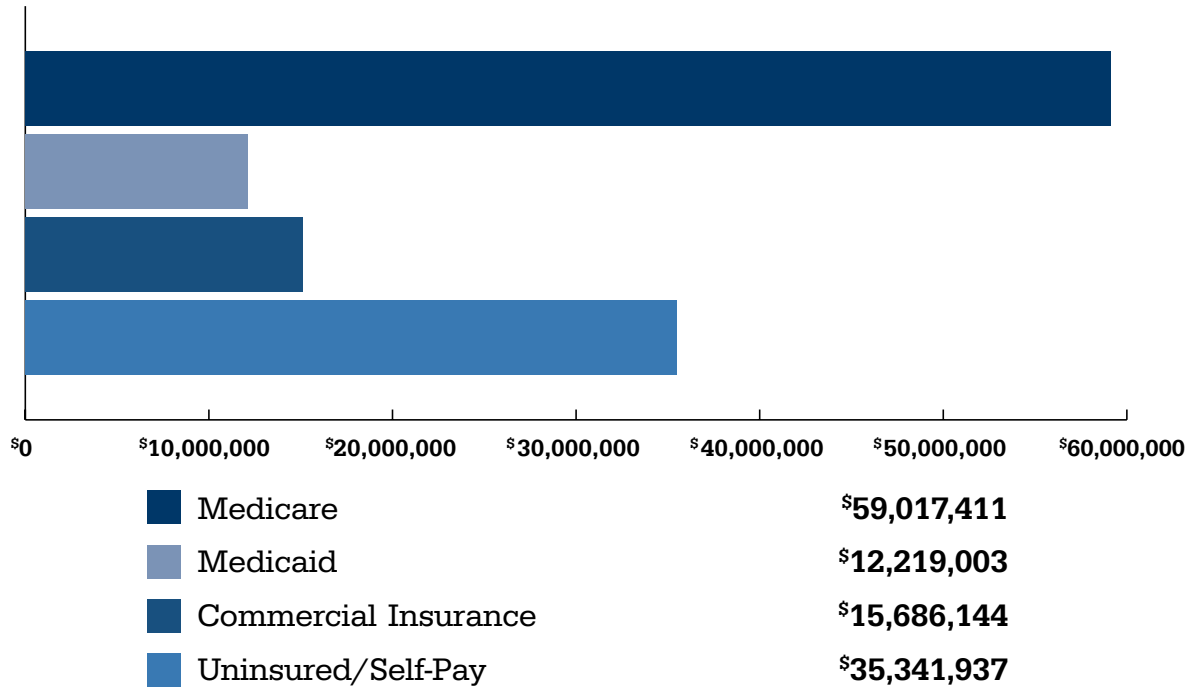
Average salary and benefit
cost per hour for physicians
\$294.22

Rent per hour for
conference room use
\$100

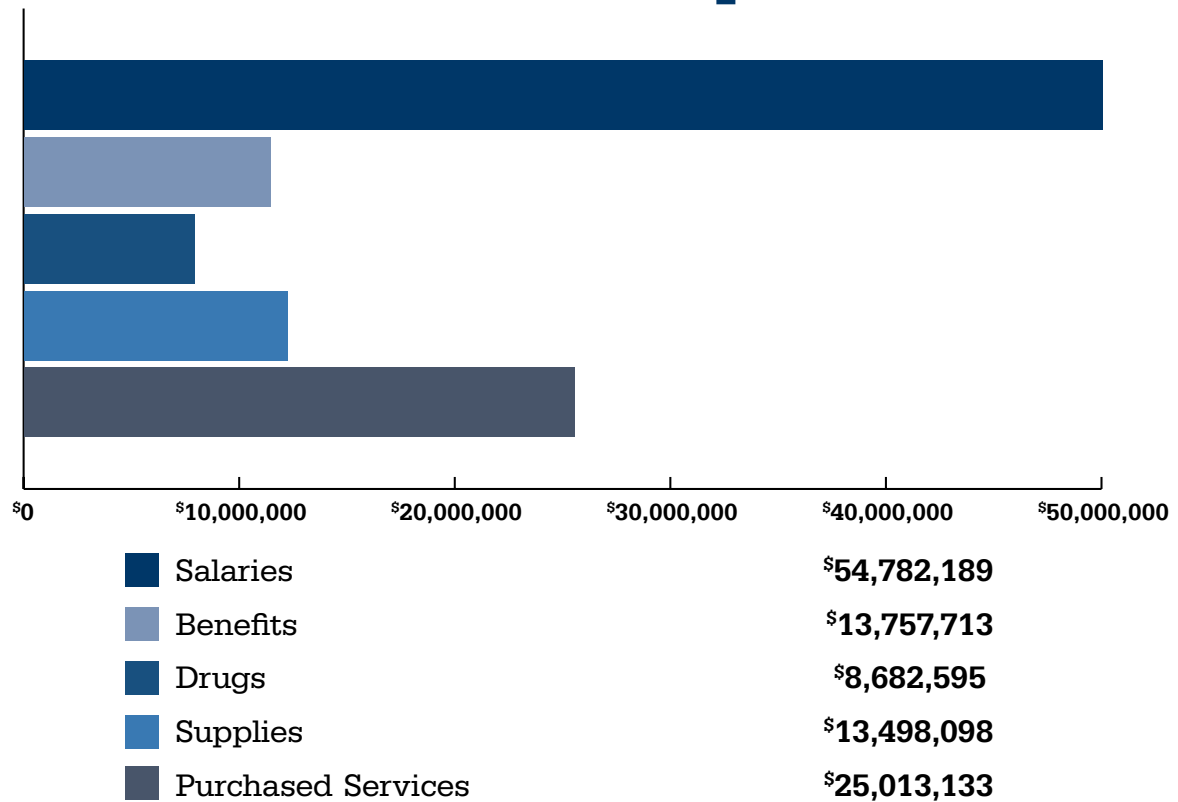
Cash and in-kind donations
\$119.768



Total Annual Revenue



Total Annual Expenses





New Providers

Access to local, quality care is our priority. In the past year, CRMC welcomed 10 new physicians and advanced practice providers to the area.



Mark Bostrom, D.O.
Internal Medicine



Paul Carey, M.D.
Family Practice



Bret Danielson, P.A.
Family Practice



Kamran Darabi, M.D.
Oncologist



Molly Edmundson, CRNA
Anesthesiology



Sam Feyder, P.A.
Emergency Medicine



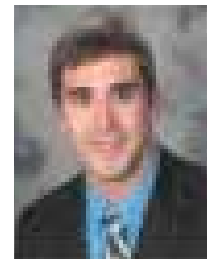
Ann Johnson, M.D.
Obstetrician/Gynecologist



Dan Lonergan, M.D.
Interventional Pain Specialist



Kyle Moore, M.D.
Foot & Ankle Surgeon



Kyle Thompson, M.D.
Surgery Fellow



Recognition & Accreditation



- ★ **Healthgrades Outstanding Patient Experience Award (2019-20)**
- ★ **Healthgrades General Surgery Excellence (2020)**
- ★ **Robotic Surgery Center of Excellence (2020)**
- ★ **America's 100 Best Hospitals for Patient Experience/Women's Choice Award (2020)**
- ★ **U.S. News & World Report High Performing in Hip Replacement (2019-20, 2018-19)**
- ★ **Silver Medal in the Association for Healthcare Foodservice's national competition**
- ★ **U.S. Department of Health and Human Services' Health Resources and Services Administration for promoting organ donation enrollment**
- ★ **Acute Stroke Ready Hospital by the Minnesota Department of Health**
- ★ **Level IV Trauma designation by the State Trauma Advisory Council**
- ★ **Minnesota Antibiotic Stewardship Honor Roll for Hospitals**
- ★ **Blue Distinction Center for Knee and Hip Replacement from BlueCross BlueShield of Minnesota**
- ★ **Care Center named to the Minnesota Antibiotic Stewardship Honor Roll for Long-Term Care**
- ★ **Brainerd Lakes Chamber of Commerce's Business Excellence Award (2018)**
- ★ **#1 Best Medical Facility in Best of the Brainerd Lakes Contest (2019 & 2018)**
- ★ **#1 Best Elder Care Services (Heartwood) in Best of the Brainerd Lakes Contest (2019 & 2018)**
- ★ **#1 Best Retirement Community (Heartwood) in Best of the Brainerd Lakes Contest (2018)**
- ★ **The Joint Commission**
- ★ **The Commission on Cancer of the American College of Surgeons**
- ★ **MIMIS accredited as an Advanced Gastro-Intestinal Minimally Invasive Surgery/Bariatric/Flexible Endoscopy fellowship**
- ★ **Baxter, Breezy Point, Crosby and Longville Clinic Laboratory accredited by the Commission on Office Laboratory Accreditation**



Innovation



Breezy Point Clinic

CRMC opened a new physician clinic in Breezy Point to better serve the medical needs of North-Central Crow Wing County and improve access to quality healthcare. The \$3 million, 10,000 square-foot facility includes nine exam rooms, a procedure room, laboratory, X-ray room, central nurses station, registration and welcoming patient area. Over 16 qualified staff are employed at the clinic which has additional space available for expansion. The new clinic is the anchor of the new North Star Center being developed on 20 acres along county road 11 across from the Breezy Point Sports Center.

Orthopaedics, Spine & Pain Clinic

A new, \$17 million state-of-the-art outpatient clinic and interior remodeling of the Crosby campus was completed to meet the needs of expanding orthopaedics and pain management services. The new clinic provides more space for expanding orthopaedics and pain services and the new spine surgeon. As part of the project, under-utilized areas of the Care Center were consolidated. In addition, the Cancer Care Center and Rehabilitation departments were relocated for patient convenience.



New Service



Palliative Care

Palliative care, specialized medical care for patients with advanced or difficult illnesses and limited life expectancies, was added to our Home Health & Hospice services. Our palliative care goals are to reduce pain, alleviate distressing symptoms and make the patient comfortable. We also explain the disease process, treatment options, and provide patients and families with the information they need to make difficult decisions.



Technology

CT Scanner

A new CT scanner was installed in Radiology. The Cannon Prime 80 SP machine includes an in-room monitor so the radiologist can view images during procedures allowing them to spend more time at a patient's side. The machine also has a larger opening for a more comfortable and less claustrophobic feeling and has a weight limit of 660 pounds.

The scan times are shorter resulting in less patient time on the table. State-of-the-art software and more powerful processors result in higher quality images even for patients with metal joint replacements.



Golf Tour Showcase

CRMC became the title sponsor of the 2019 Brainerd Lakes Area Tour Showcase, an effort to bring an official Web.com PGA Tour Event to the Brainerd Lakes. The tournament raised \$10,000 for the Charitable Fund.





Community Benefit

CRMC is committed to making a positive impact on the health of the community it serves. One of the many strategies we use to do this is by providing for the unique health needs of area residents.

Using information collected in a Community Health Needs Assessment, CRMC embarked upon many efforts to improve residents' health status, increase their life spans, and elevate their overall quality of life. A healthy community is not only one where its residents suffer little from physical and mental illness, but also one where its residents enjoy a high quality of life.

Community Support

This past year, we give back over \$3 million to the community to improve health and ensure that all patients have access to quality health care.

Community Education and Support

We provide health-related education to the community through events, classes, lectures and wellness screenings. Most are completely free-of-charge to the community.

- Nearly 10,000 people attended a health or wellness event last year.
- We offer year-round education classes on topics like CPR/First Aid, childbirth and breastfeeding.
- A variety of support groups are offered for patients and their families.
- Our health care experts present numerous educational seminars throughout the year.





Supporting Our Community

We supported other organizations and initiatives through sponsorships and donations that share our goal to improve the health of our community. In 2019, cash and in-kind donations totaled \$120,000. Our staff also donate time, materials, and leadership to many community organizations including various schools; Cuyuna Lakes, Brainerd Lakes and Nisswa chamber of commerces; Hallett Community Center; Northland Arboretum; Race for the Cure; Kinship Partners; Brainerd, Crosby, Ironton, Cuyuna and Deerwood fire departments and others.

Investing in your hospital

We invest approximately \$3 million every year in capital improvements such as new equipment, facilities and technology infrastructure. This is a strong affirmation of our commitment to providing the best possible care for our community. Our “profits” are reinvested to improve the quality of care we offer, not distributed as dividends to shareholders. The return-on-investment: a healthier community for us all.



Charity Care

Charity care consists of health care services provided to low-income patients at free or reduced prices, and is provided to those who have exhausted third-party resources, do not qualify for Medicaid or have insufficient incomes. Ability to pay is based on Federal Poverty Income Guidelines, which considers family size, new assets, and overall financial position. CRMC makes significant efforts to ensure charity care is granted to all patients who qualify.

Unpaid cost of Medicaid

Medicaid is a jointly funded, Federal-State health insurance program for low-income individuals. Health care Medicaid reimburses provides well below the actual cost of care, so the unpaid cost of Medicaid represents the difference between our cost and the amount Medicaid paid us for the health care services we provided.

Subsidized health services

Our service area has a high need for several health care services that do not generate sufficient revenue to cover the cost of providing them. We subsidize the following services to ensure their availability to our community:

- Obstetrics
- Physician Clinics
- Hospice/Home Health
- Rehabilitation
- Clinical Nutrition
- Behavioral Health



VOLUNTEER CRMC

Our mission has meaning

Under this employee volunteer program, when staff volunteer 10 hours or more of their personal time at a non-profit organization in the area, CRMC donates \$100 to the organization. And, if five or more employees register for a charity run/walk/bike event, CRMC will sponsor the team with up to \$50 each employee (maximum of \$2,000). Employees choose how they spend their time and are empowered to choose their own causes to support so they can effect change in the areas most important to them, either within their own lives or in their own communities.



Among the organizations CRMC has donated to on behalf of its staff are:

- Alcoholics Anonymous
- Bit and Bridle Saddle Club
- Blind Lake ATV Club
- Brainerd Basketball Association
- Brainerd High School
- Brainerd Lakes Curling Club
- Brainerd Varsity Cheer Team
- Community Care n Share in Emily
- Covenant Pines Bible Camp
- Crisis Line and Referral Center
- Crosby Days for Girls
- Crosby Fire Department
- Crosby-Ironton Schools
- Crosby-Ironton Youth Softball
- Crow Wing County Civil Air Patrol
- Crow Wing County Sheriff's Mounted Patrol
- Cuyuna Lakes Chamber of Commerce
- Cuyuna Lakes High School Mountain Bike Team
- Cuyuna Range Elementary School
- Cuyuna Range Youth Center
- First Lutheran Church in Aitkin
- Forestview Middle School in Baxter
- Grace United Methodist Church
- Junior Achievement of Aitkin County
- Lakes Area Pregnancy Support
- Lakewood Evangelical Free Church in Baxter
- Mid-Minnesota Women's Center in Brainerd
- Nisswa Elementary School
- Northern Lakes Youth Hockey Association in Pequot Lakes
- Northland Arboretum
- Pequot Lakes Community Education
- Pequot Lakes Cub Scouts Pack 102
- Pioneer Elementary PTO in Pierz
- Sexual Assault Services of Brainerd
- Silos to Circles
- St. Joseph's Catholic Church in Crosby
- St. John's Lutheran Church in Aitkin
- The Log Church in Crosslake Timber Bay
- Trinity Lutheran Church in Brainerd
- United Way of Crow Wing County
- Vacationland Figure Skating Club in Brainerd
- Wild & Free Wildlife Rehabilitation
- Zion Lutheran Church in Milaca



Cuyuna Regional Medical Center **CHARITABLE FUND**

CRMC's Charitable Fund connects compassionate people with the healthcare efforts they care most about. It exists to help people improve and enhance the quality of care for patients at CRMC and people in the Brainerd Lakes Area. Thanks to caring donors, the Charitable Fund has touched many lives. Your support will enable CRMC to touch many more.

In 2019, more than \$196,482 was donated to the Charitable Fund. With this support, CRMC awarded seven scholarships for youth attend a Type 1 Diabetes Camp in Hudson, Wisc.; provided over \$1,000 in gas cards and \$500 in food vouchers to assist families with travel to Children's Hospital in the Twin Cities; and sponsored 11 individuals attendance to JDRF's Type One Nation Summit in November in St. Paul for a day of education and connection. CRMC also provided \$11,000 in assistance to cancer patients undergoing treatment and helped make the lives of numerous hospice patients more comfortable.

Fundraising Events

Because of Brandon

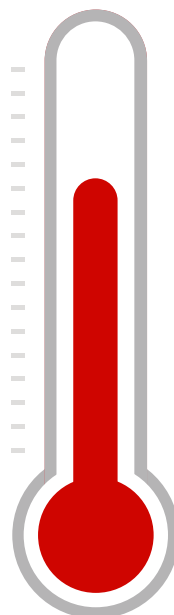
\$54,018

raised for diabetes education

Kaleidoscope

\$49,469

raised to assist cancer patients



Driving for Hospice

\$23,700

to assist with end of life care

Tree of Love

\$3,490

donated toward hospice care



YOUR OPPORTUNITY TO SUPPORT HEALTHCARE IN OUR COMMUNITY



Donors are critical to fulfilling CRMC's mission. Because they believe in the mission, they give of themselves as volunteers and with their gifts. **To all who have supported the Charitable Fund, thank you!** Without your support, making a difference in the lives of community residents' well-being would be harder to attain.



“Thank you for helping us bring our voices to Washington for those living with Type 1 and Type 2 diabetes. Your support means the world and we are forever grateful for your generosity!”

– Stephanie & Ethan Weik, Pequot Lakes

Youth Advocates for Change

Ethan Weik of Pequot Lakes was selected as one of 200 youth nationwide to participate in the American Diabetes Association's Call to Congress on March 28, 2019. CRMC's Because of Brandon fund assisted Ethan and his mother Stephanie with travel costs to Washington D.C. so he could testify before Congress on the challenges diabetics face when it comes to healthcare costs, insulin affordability and access, healthcare denial to preexisting conditions and continued efforts at cure research. CRMC was proud to support Ethan and his work in public policy to raise awareness of the challenges Type 1 diabetics face and to help make a positive impact on those affected by diabetes.



Gifts of \$2,500 or greater

Brainerd Lakes Area Tour Showcase
Crosby Fire Relief Association
Cuyuna Firemen's Relief Association
Fifth Generation, Inc.
Amy Hart

North Risk Partners
Thelen Heating & Roofing, Inc.
Robert M. Thornton
Dr. Robert & Sharri Westin

Gifts of \$1,000 - \$2,499

Dr. Fawn & Thomas Atchison
Kyle & Laura Bauer Family
Dr. Rajesh Bhargava
Deerwood Bank
DeGraaf Financial
Drs. David & Monica Goodwin
Chris Hoehn
Dr. Brian Holmgren

James Stuart, III Family, Foundation
Koop Funeral Home
Marco, Inc.
Dr. Kara Maucieri
Lisa & Maurice Slepica
Stinson LLP
Stacy Weldon

Gifts of \$500 - \$999

Terry Abear
ACCT, Inc.
Michael Austin
Bunco for Breast Cancer
Kathleen Carlson
Clow Stamping Company
Crosby Police Department
CTC
Grand Casino Mille Lacs
Arlene Haukos
Theresa Hiller-Baty
Dan & Laura Hoffard
Mr. & Mrs. Richard Houge

Hy-Tec Construction
Jackson Physician Search
Kraus-Anderson
Gordon McArthur
Minneapolis Radiation Oncology/
Brainerd Radiation Therapy
North Central Medical Supply &
Equipment
Professional Service Bureau, Inc.
Rasinski's Total Door Service
Dr. Laura Rathe
Regional Diagnostic Radiology
Rice Lake Construction Group

RSM US LLP
Saving Hearts for Suicide
Prevention
Albert Schewe
Siemens
Sourcewell
Peggy Stebbins
Suzanna Gutzman Steinke &
Christopher Warren Steinke
Nancy Stratman
The Cuyuna Iron Range Riders
Unity Bank
Vaaler Insurance, Inc.

Gifts of \$250 - \$499

American Legion Post 443
Anderson Brothers Construction
Company
Baxter Kiwanis
Katie Berg
Kim Blank
Bill Brekken
Breth-Zenzen Fire Protection
Todd Bymark
Central Lakes Physicians PA
Central MN Diagnostic, Inc.
Jodi Christopher
CliftonLarsonAllen
Crosby-Ironton Public Schools
Joyce A. Gindorff
Graphic Packaging International
Joni Gutknecht

Maureen Haines
Jennifer Hirschey
Hospital Pathology Associates, P.A.
Impact Design, LLC
Elisabeth Jenkins
Krista Kommer
Bryan Krantz
Matthew Lacy
Lamar Outdoor Advertising
Life Link III
Ken Mackley
Sally McCollister
Alison Meyer
Mid-Minnesota Federal Credit Union
Northland Smiles
Sarah Oehrlein
Jennifer Podsiadly

Preferred One
River Oaks Dental
RJ Mechanical Inc.
Cynthia Schmitz
Schwab-Vollhaber-Lubratt
Service Corp
Brittany Schwarz
Tarna Squires
St. Cloud Acoustics, Inc.
Clarice Staulcup
Leanne Sura
Dean Turnbloom
Amy Vleck
Bonnie Wermter
Kamari Young



Gifts of \$100 - \$249

Amber Block
Theresa Blomer
Bremer Bank
Lea Carlson
Diane Cash
Kristin Christensen
Cuyuna Iron Range Riders
Dondelinger Automotive
Emily Cooperative Telephone Company
Emily Meats
Heather Erickson
Fifty Lakes Firemen's Relief Association
Foundation for Surgical Innovation & Education
Theresa Gade
Barb Genereux
Daniel & Shirley Goodwin
Krisann Gray
Leslie Grays
Great River Eye Clinic
Cathline Helstrom
Dr. Jonathan Herseth

Ardis Hopps
Alan Hudalla
Iron Range Veterinary Clinic LLC
Julie Iten
Dr. Christopher Kaczmarczyk
Jessica Koschmeder
Ryan Kramer
Eileen Kurpiers
Rebecca Larson
Dr. Tim & Michelle LeMieur
Maucieri's Italian Bistro
Christine McCusker
Ashley McGinnis
Stephanie Miller
Margaret Moritz
Laurie Murphy
NXC Imaging
Oars n Mine
Judy Oestreich
Carla Olson
Doug Oster
Darcy Otto

Mykaela Paradis
Stephanie Perrine
Claudia & David Peterson
Kya Picha-Hollister
Precision Tool Technologies
Jody Rau
Teri Reynolds
Justin Richards
Toby & Darcy Rowan
Michelle Sjolund
Blake Sweney
Colleen Tauzell
Kara Thomas
Dale VanHorn
Widseth Smith Nolting
Samantha Wiczoreak
Rich & Laurena Will

Gifts of \$1 - \$99

Amazon Smile
Wendi Andersohn
Zach Asbach
Rose Bankers
Shawna Bartlett
Jennifer Beckman
Ruth Beckrich
Jodi Bedard
Pamela Beebe
Natalie Berg
Bobbie Jo Birkholz
Anne Bliss
Kati Lynn Brezinsky
Tamera Browning
Matthew Bugnacki
Amy Carlson
Cascade Ladies
Kelly Chase
Tess Chase
Johanna Christenson
Angela Cobb
Helen Colburn
Robin Cranfill
Rachel Cummings
Karlee Dagen
Debra Davies
Wayne Davis
Danielle Dee
Sandra England
Katie Feil
Amanda Ford
Peggy Forstner
Brittany Fox
Diane Francis
Rose Mary Franta

Marie Futhey
Patrice Glenz
Jackie Godfrey
Traci Gujer
Scott Hansen
Adriana Hanson
Lary Hanson
Kristen Hessler
RaeLynn Horton
Melinda Jackson
Julie Jenson
Priscilla Johnson
AJ Karpinski
Brent Katzenberger
Sharon Knutson
Laurie Kohn
Tracy Kostek
Mike Kramer
Sandy Kuschel
Elizabeth Lagerstrom
Kathleen Lallier
Scarlett Langenfeld
Carolyn Larson-Wedin
Gail Lee
Danielle Lenzmeier
Rise Luna
Vic Machen
Michael Mailhot
Amber McKay
Robert McLaughlin
Mary McMillan
Kathlene Meyer
Theresa Meyer
Sharon Mills
Russell Miner

Christina Nelson
Tom & Gayle Nelson
Network for Good
Mary Novotny
Deb Nygard
Jerra Nylund
Shirley Ogborn
Kayla Olander
Jesse Oman
Twilla Oskey
Over the Hills Gang
Paul Perpich, DDS
Kelly Peterson
Russ Philstrom
Karilee Pietz
Brenda Potter
Dena Pribbenow
Candace Prigge
Cassie Prochaska
Zulma Quiet
James Remington
Marlene Reuber
Kay Rineck
Debra Rochel
Lisa Roden
Susan Rossing
Gretchen Ruby
Joyce Sawatzke
Nadine Schaeffbauer
Elizabeth Schmaltz
Patricia Schmid
Linda Schneider
Abygail Schroeder
Megan Sims
Christine Smith

Hannah Spicer
Anna Stich
Sheila Stine
Jennifer Stirewalt
Elizabeth Stoneking
Joshua Stoneking
Honi Strange
Nicki Tabaka
Lisa Taylor
Wendy Thiebault
Katie Thompson
Thrivent Choice
Courtney Thull
Jason Todd
Julie Torgerson
Samantha VanHorn
Floyd Vetrone
Kim Waffensmith
Jean Walberg
Kathy Watters
Stephanie Weik
Diane Weiland
Anne Wendt
Jenna Wentzlaff
Tammi White
Brenda Wills-Marolt
Alicia Wiseley-Peterson
Jill Wittrock



Board of Directors



Kyle Bauer
*Chief Executive
Officer*



Andrea Bedard
*District Governing
Board*



Kent Feltz
*Owner
KF Engineering,
M-Pro and M3B*



Dr. Joshua Horowitz
*Interventional Pain
Specialist*



Denise Laudenbach
*Owner
The Dock Panther*



Wade Leonard
*President
Rice Lake
Construction Group*



Dr. Peter MacKay
*Family Medicine
Physician*



Ginny Savaloja
District Governing Board



Bart Taylor
*RiverWood Bank
Regional President*

Senior Management



Kyle Bauer
*Chief Executive
Officer*



Katie Berg
*Chief Financial
Officer*



Kimberly Blank
*Chief Human
Resources Officer*



Amy Hart
*Chief Operating
Officer*



Nancy Stratman
*Senior Services
Administrator*



Stacy Weldon
*MSN, RN, Chief
Nursing Officer*



Dr. Robert Westin
*Chief Medical
Officer*

Mission:

Accommodating you with care
and compassion by dedicating
ourselves to you every day.

Vision:

Cuyuna Regional Medical Center
will be the best place to receive care,
practice medicine, and work.

Values:

People

We are committed to having highly
engaged team members through training,
teamwork and communication.

Quality & Safety

We strive to consistently
provide the highest levels
of safe and quality care.

Service

We are committed to our Standards
for Excellence and strive to exceed
the expectations of those we serve.

Innovation

We are committed to a supportive
environment that encourages
new ideas and creativity.

Stewardship

We honor our heritage and hold
ourselves accountable for preserving
our human, financial and natural resources.

CRMC

CUYUNA REGIONAL
MEDICAL CENTER

Dedicated to You. Every Day.



(218) 546-7000



cuyunamed.org

FIND US ON:



Facebook



YouTube



Instagram



Twitter